

ESD Visualizer

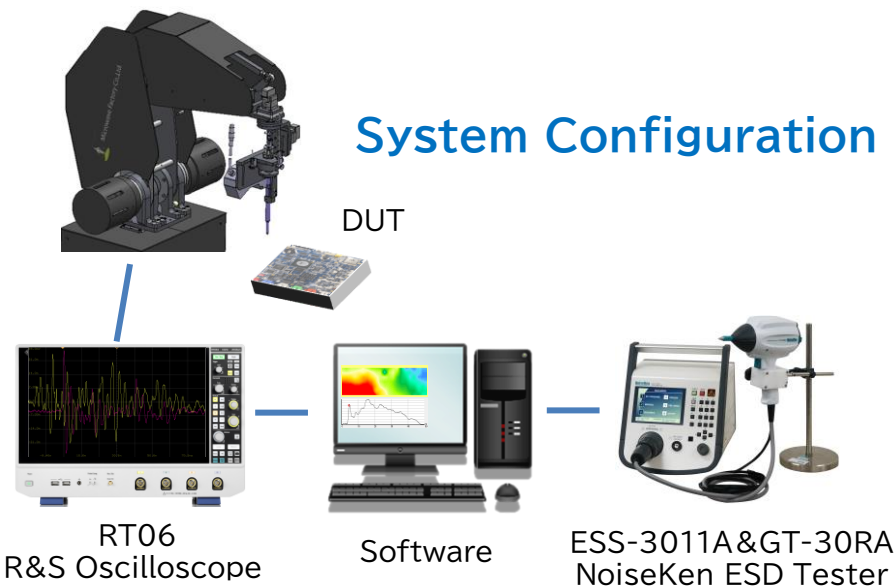
High Accuracy Scanner with 5 Axis Automated Robot Arm

Accompanying electric devices low voltage operating, there are a lot of opportunities of ESD being issue for malfunction of the devices. This is ESD Visualizer (especially the route) to evaluate which should be measurement and the effectivity the counteractions, which is structured by 5 axis Arm robot and PC to control Oscilloscope, ESD tester, etc.

Features

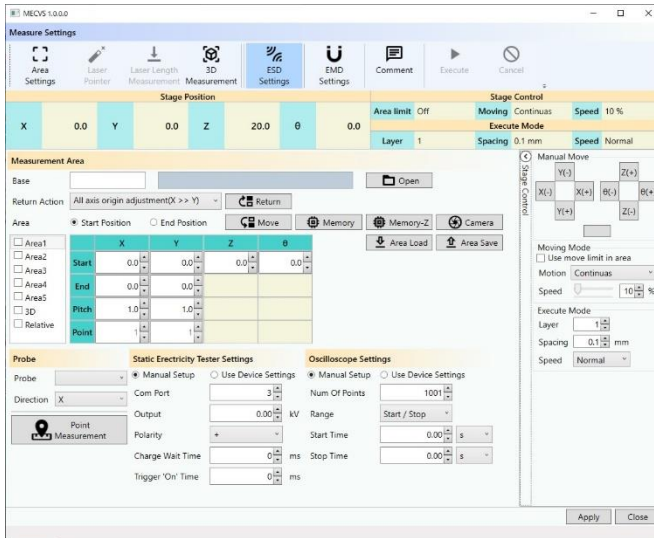
- ESD Visualization Functionality
- 5 Axis Automated Robot Arm
- Supports the complex shapes with uneven surface
- Support the horizontal scanning
- Fully automated control and measurement software

MECVS

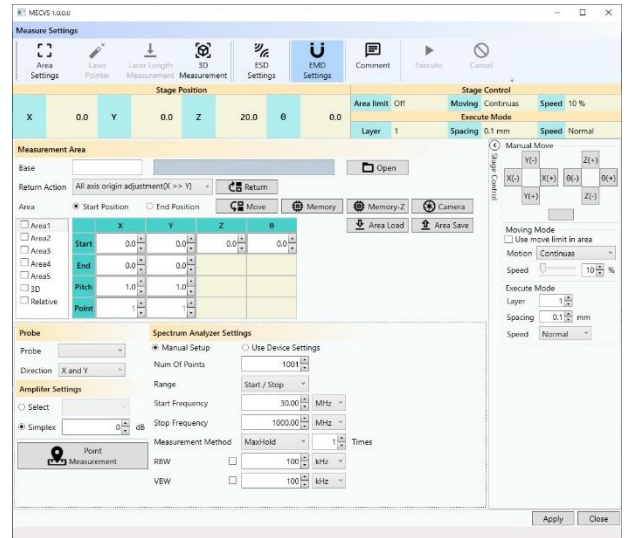


Measurement Range	400mm(W) x 350mm(D) x 300mm(H), θ : ± 90 deg
Positioning Accuracy	0.1mm step (Pitch), 0.1deg (Angle)
Noise Measurement Frequency	150kHz~3GHz (Standard), 1Ghz~8GHz (Optional)
Size	0.8m(W) x 1.1m(D) x 1.8m(H)
Weight	100 kg typ.
Power	100-230 VAC
Interface	LAN, USB, GPIB
PC&Software	PC(Windows), ESD&EMI software

Setting view

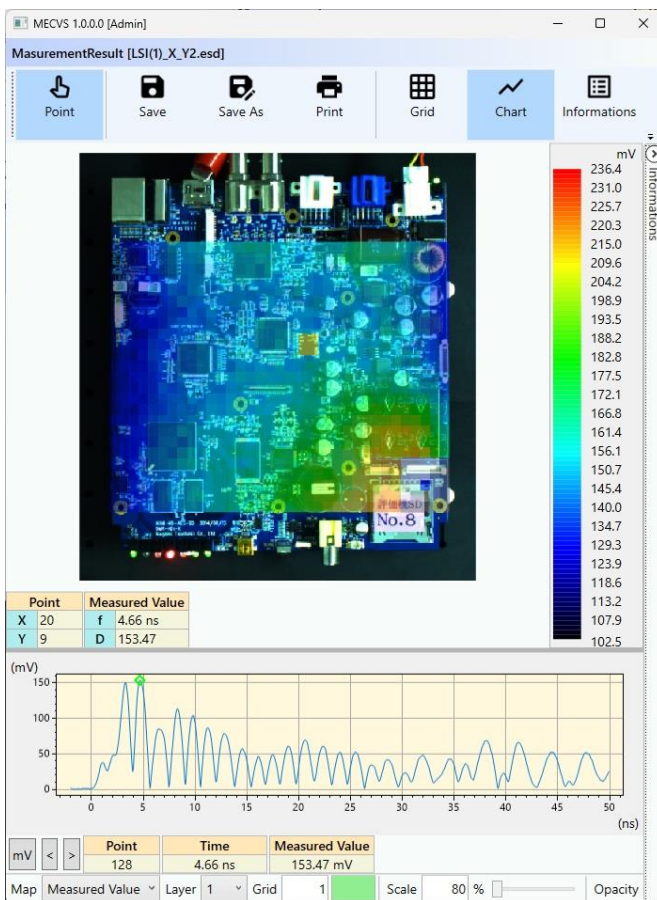


ESD Setting

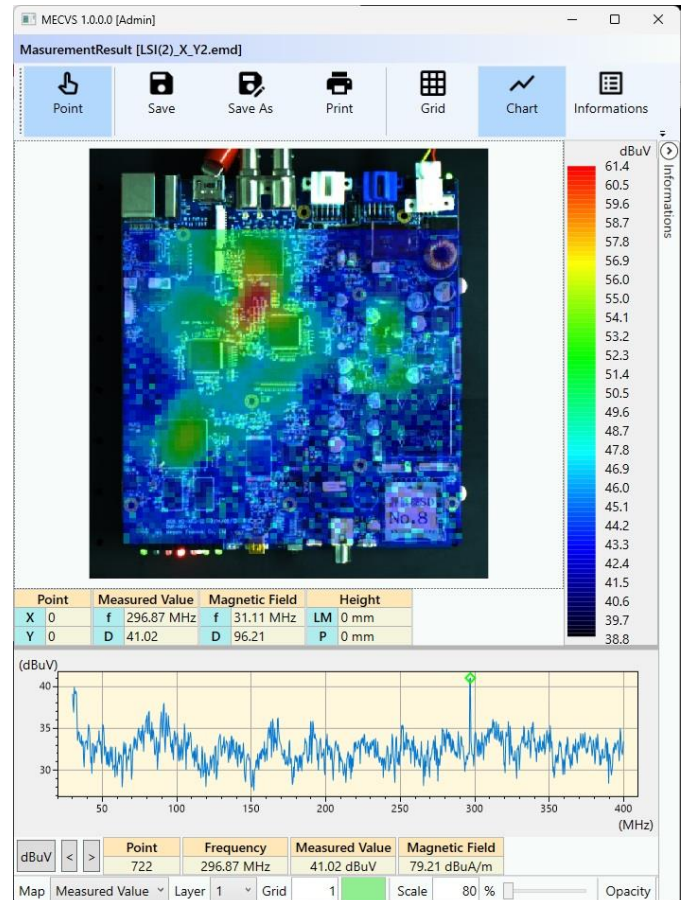


EMI Setting

Measurement Result



ESD Visualize



EMI Visualize