



Positioners & Controller

Essential equipment for Antenna evaluation

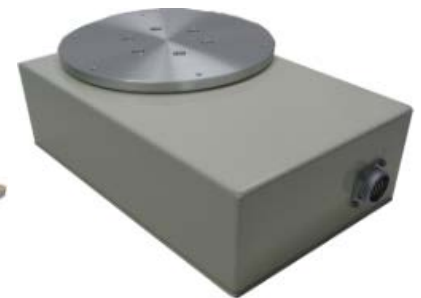
Antenna is essential component for Mobile phone, WiFi, Bluetooth, recent mm-wave radar, etc. Our Positioners (Turn-tables) and controllers must be useful for Antenna Radiation pattern, which is one of antenna evaluation method.



MTP2 (2axis) series



MTP1222A-S



MTP113A-S



Positioner Controller

Features

- Available to combine Azimuth, Elevation, Polarization
- Automatically Measurement by Software

Type	MTC122A-S	MTC113A-S	MTC113A-0
Torque Speed (Max.)	6rpm	5rpm	3rpm
Direction	Forward / Reverse	Forward / Reverse	Forward / Reverse
Rotation angle	Non Limit	Non Limit	Non Limit
How to Drive	Servomotor with Gear	Steppingmotor with Gear	Roller Drive with Steppingmotor
Position Accuracy	$\pm 0.0056^\circ$	$\pm 0.0083^\circ$	$\pm 0.03^\circ$
Repeat Accuracy	0.0028°	0.0042°	0.02°

*Customized for size, performance as demanded as much as possible.